

NENIN - 2013



2013

# NENIN

## ASSEMBLAGE / BLEND

Merlot 67%

Cabernet Franc 33%

## DATE DE VENDANGE / HARVEST PERIOD

Du 1er au 11 octobre 2013

From 1st to 11th October 2013

## ANALYSES / LAB ANALYZES

Degré : 13,30 %vol. - Acidité Totale : 3,65 gH<sub>2</sub>SO<sub>4</sub>/l - pH : 3,65 - IPT : 62

Alcohol degree : 13.30 %vol. - Total Acidity : 3.65 gH<sub>2</sub>SO<sub>4</sub>/l - pH : 3.65 - IPT : 62

## LE MILLÉSIME / VINTAGE 2013

Le millésime 2013 fut marqué par un printemps frais et humide à l'origine d'un début de cycle végétatif très lent et d'une floraison exceptionnellement tardive.

La véraison et le début de maturation bénéficièrent ensuite de conditions favorables avec un mois de juillet parmi les plus chauds de la décennie et un début août sec et ensoleillé.

Malgré le retour des pluies à partir de mi-septembre et grâce à la bonne gestion du vignoble (anticipation des effeuillages et échardages, enherbements ciblés), l'état sanitaire du raisin resta satisfaisant jusqu'au dernier jour de récolte.

The 2013 vintage began with a wet spring and much cooler weather through May, resulting in a very late blossoming. The latter began in a fairly dry and mild atmosphere and finished in cold, rainy weather that caused considerable

**GREENWOOD**

FINE WINE

Est. 1997

NENIN - 2013



flower shatter on the plots of Merlot. Drier, warmer weather through July and August, coupled with a painstaking thinning out over the entire vineyard during colour change, allowed this step to be completed more quickly and to reduce the extraordinary delay accumulated. In this delicate vintage, anticipation was the keyword in the vineyard. A vegetal cover was maintained and adapted to the various soils of the property. Early de-leafing and lateral shoot removal (immediately after the end of flowering) guaranteed that the grapes remained healthy until harvest time, despite the return of rainfall from mid-September. The eight days of picking were thus spread over a two-week period, ensuring technological and phenolic maturity was achieved for the crops from each of the property's different terroirs.

**NOTES DE DÉGUSTATION / TASTING NOTES**

**WINE ADVOCATE Robert Parker**

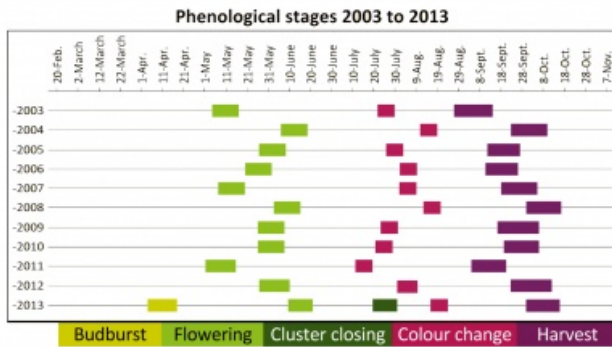
A good effort from Château Nénin, which is owned by the proprietor of the well-known St Julien estate, Château Léoville Las Cases, the 2013 Nénin is a blend of 63% Merlot and 37% Cabernet Franc made from tiny yields of 30 hectoliters per hectare. The natural alcohol came in 13.3%. The wine exhibits pleasant notes of black currants, black cherries and mocha in its fruity, medium-bodied, well-balanced personality. No serious tannins interfere with its enjoyment. Drink it over the next 5-6 years.

**GREENWOOD**

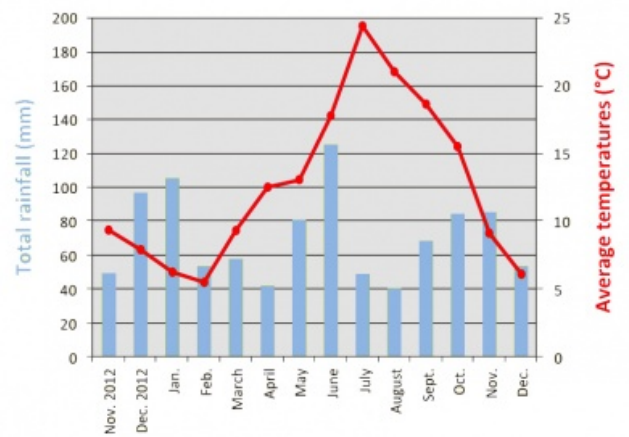
FINE WINE

Est. 1997

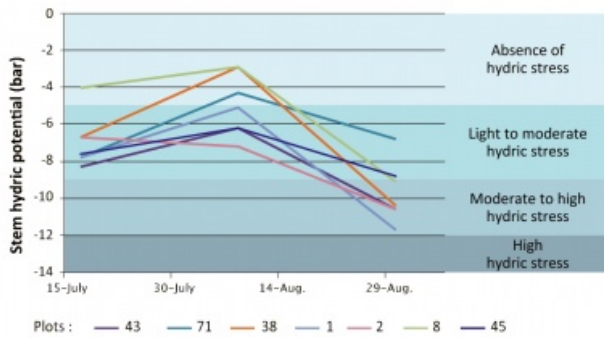
### Stades phénologiques / Phenological cycle



### Pluviométrie et températures en 2013 / Total rainfall and average temperatures in 2013



### Mesure des contraintes hydriques en 2013 / Hydric stress in 2013



### Comparatif des températures et précipitations sur la période végétative : du 1er mars au 31 octobre / Comparison of temperatures and rainfall during the growth cycle : from 1st March to 31st October

